



TEST REPORT

Applicant : KOLON PLASTICS, INC.
Address : #1018, Ungmyoung-dong, Gimcheon-si,
Gyeongsangbuk-do, 740-180 Korea

Page: 1 of 4

Report No. RT11R-U0039-008-E

Date: Jan. 13, 2011

Sample Description : The following submitted sample(s) said to be:-

Name/Type of Product : Kocetal
Name of Material : POM
Sample ID No. : RT11R-U0039-008
Item No. : K100, K200, K300, K300EW, K500, K700, K900
Manufacturer/Vender : KOLON PLASTICS, INC.

Sample received : Jan. 10, 2011
Testing Date : Jan. 10, 2011 ~ Jan. 13, 2011
Testing Environment : Temperature : (24 ± 2) °C, Humidity : (60 ± 5) % R.H.

Test Method(s) : Please see the following page(s).
Test Result(s) : Please see the following page(s).

* Note 1 : The test results presented in this report relate only to the object tested.

* Note 2 : This report shall not be reproduced except in full without the written approval of the testing laboratory.

* Note 3 : The item no. is assigned by client and indicated according to their requirement and guarantee letter.

Approved by,

E.Y.Lee / Lab. Technical Manager

Authorized by,

H.W.Yoo / Lab. General Manager

This Test Report is issued by the Company subject to its Terms and Conditions of Business printed overleaf. Attention is drawn to the limitations of liability, indemnification and jurisdictional issues defined therein. This Test Report shall not be reproduced, except in full, without prior written consent of the Company.

Intertek Testing Services Korea Ltd.

Seoul Office: Tel : 02-6090-9500 Fax : 02-3409-0026 Daegu Office : Tel : 053-600-8647 Fax : 053-600-8645 Web Site : www.Intertek.co.kr
Seoul Lab. Address : 1/F, A-ju Digital Tower, #284-56, Seongsu 2-ga, Seongdong-Gu, Seoul, 133-833 Korea
Ulsan Lab. Address : #340-2, Yongam-Ri, Chongryang-Myun, Ulsan-Gun, Ulsan 689-865 Korea



TEST REPORT

Page: 2 of 4
Date: Jan. 13, 2011

Report No. RT11R-U0039-008-E

Sample ID No. : RT11R-U0039-008

Sample Description : Kocetal

| Test Item | Unit | Test Method | MDL | Result |
|--|-------|--|-----|--------|
| Cadmium (Cd) | mg/kg | With reference to IEC 62321 Edition 1.0:2008, by acid digestion and determined by ICP-OES | 0.5 | N.D. |
| Lead (Pb) | mg/kg | | 5 | N.D. |
| Mercury (Hg) | mg/kg | | 2 | N.D. |
| Hexavalent Chromium (Cr ⁶⁺) (For non-metal) | mg/kg | With reference to IEC 62321 Edition 1.0:2008, by alkaline digestion and determined by UV-VIS Spectrophotometer | 1 | N.D. |
| Polybrominated Biphenyl (PBBs) | | | | |
| Monobromobiphenyl | mg/kg | With reference to IEC 62321 Edition 1.0:2008, by solvent extraction and determined by GC/MS | 5 | N.D. |
| Dibromobiphenyl | mg/kg | | 5 | N.D. |
| Tribromobiphenyl | mg/kg | | 5 | N.D. |
| Tetrabromobiphenyl | mg/kg | | 5 | N.D. |
| Pentabromobiphenyl | mg/kg | | 5 | N.D. |
| Hexabromobiphenyl | mg/kg | | 5 | N.D. |
| Heptabromobiphenyl | mg/kg | | 5 | N.D. |
| Octabromobiphenyl | mg/kg | | 5 | N.D. |
| Nonabromobiphenyl | mg/kg | | 5 | N.D. |
| Decabromobiphenyl | mg/kg | | 5 | N.D. |
| Polybrominated Diphenyl Ether (PBDEs) | | | | |
| Monobromodiphenyl ether | mg/kg | With reference to IEC 62321 Edition 1.0:2008, by solvent extraction and determined by GC/MS | 5 | N.D. |
| Dibromodiphenyl ether | mg/kg | | 5 | N.D. |
| Tribromodiphenyl ether | mg/kg | | 5 | N.D. |
| Tetrabromodiphenyl ether | mg/kg | | 5 | N.D. |
| Pentabromodiphenyl ether | mg/kg | | 5 | N.D. |
| Hexabromodiphenyl ether | mg/kg | | 5 | N.D. |
| Heptabromodiphenyl ether | mg/kg | | 5 | N.D. |
| Octabromodiphenyl ether | mg/kg | | 5 | N.D. |
| Nonabromodiphenyl ether | mg/kg | | 5 | N.D. |
| Decabromodiphenyl ether | mg/kg | | 5 | N.D. |

Tested by : YK Cho, HJ Kim

Notes : mg/kg = ppm = parts per million
 < = Less than
 N.D. = Not detected (<MDL)
 MDL = Method detection limit

This Test Report is issued by the Company subject to its Terms and Conditions of Business printed overleaf. Attention is drawn to the limitations of liability, indemnification and jurisdictional issues defined therein. This Test Report shall not be reproduced, except in full, without prior written consent of the Company.

Intertek Testing Services Korea Ltd.

Seoul Office: Tel : 02-6090-9500 Fax : 02-3409-0026 Daegu Office : Tel : 053-600-8647 Fax : 053-600-8645 Web Site : www.Intertek.co.kr
 Seoul Lab. Address : 1/F, A-ju Digital Tower, #284-56, Seongsu 2-ga, Seongdong-Gu, Seoul, 133-833 Korea
 Ulsan Lab. Address : #340-2, Yongam-Ri, Chongryang-Myun, Ulsan-Gun, Ulsan 689-865 Korea



TEST REPORT

Page: 3 of 4

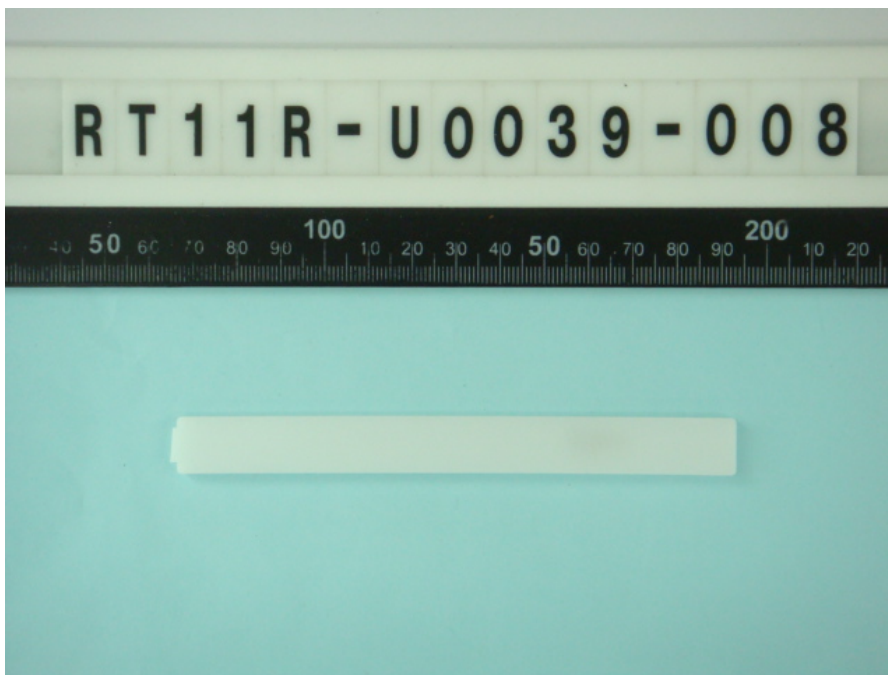
Date: Jan. 13, 2011

Report No. RT11R-U0039-008-E

Sample ID No. : RT11R-U0039-008

Sample Description : Kocetal

* View of sample as received;-



This Test Report is issued by the Company subject to its Terms and Conditions of Business printed overleaf. Attention is drawn to the limitations of liability, indemnification and jurisdictional issues defined therein. This Test Report shall not be reproduced, except in full, without prior written consent of the Company.

Intertek Testing Services Korea Ltd.

Seoul Office: Tel : 02-6090-9500 Fax : 02-3409-0026 Daegu Office : Tel : 053-600-8647 Fax : 053-600-8645 Web Site : www.Intertek.co.kr

Seoul Lab. Address : 1/F, A-ju Digital Tower, #284-56, Seongsu 2-ga, Seongdong-Gu, Seoul, 133-833 Korea

Ulsan Lab. Address : #340-2, Yongam-Ri, Chongryang-Myun, Ulju-Gun, Ulsan 689-865 Korea



TEST REPORT

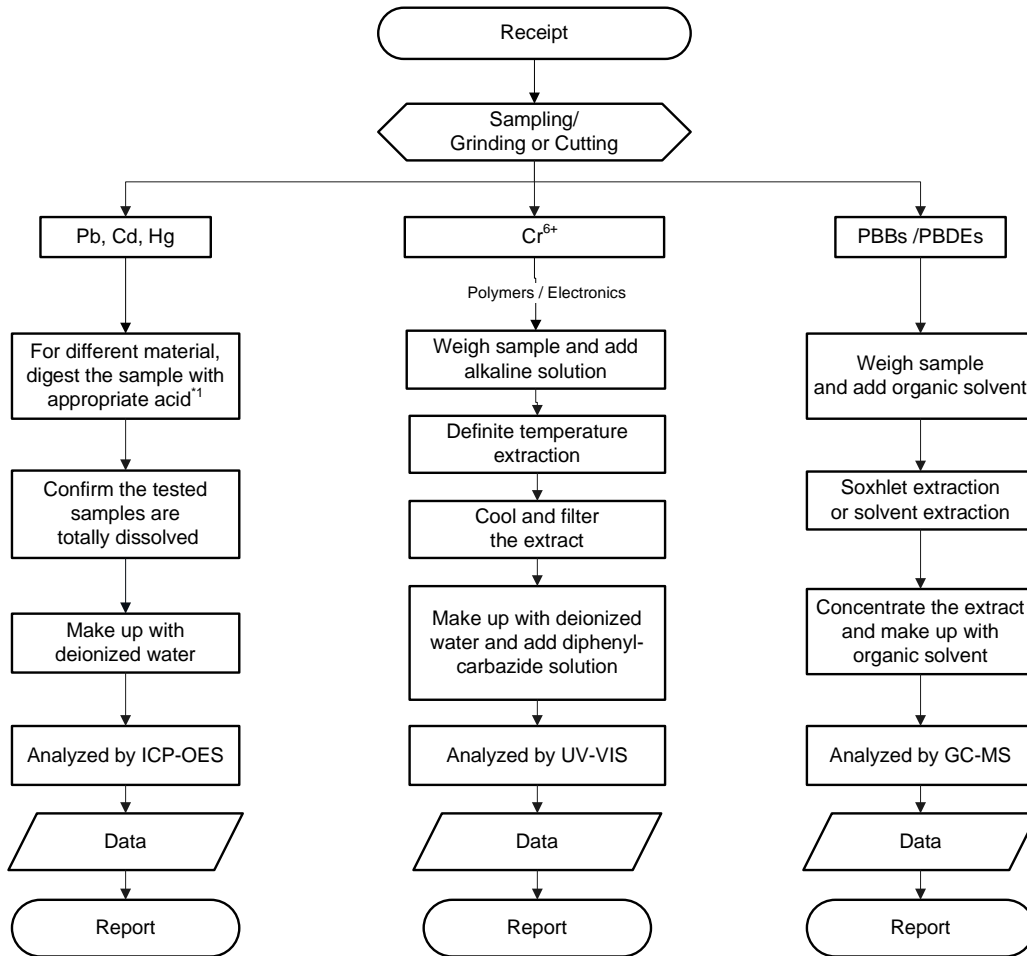
Page: 4 of 4
Date: Jan. 13, 2011

Report No. RT11R-U0039-008-E

Sample ID No. : RT11R-U0039-008

Sample Description : Kocetal

Flow Chart
(IEC 62321 Edition 1.0 : 2008)



Remarks :

*1 : List of appropriate acid :

| Material | Acid added for digestion |
|-------------|--|
| Polymers | HNO ₃ , HCl, HF, H ₂ O ₂ , H ₃ BO ₃ |
| Metals | HNO ₃ , HCl, HF |
| Electronics | HNO ₃ , HCl, H ₂ O ₂ , HBF ₄ |

***** End of Report *****

This Test Report is issued by the Company subject to its Terms and Conditions of Business printed overleaf. Attention is drawn to the limitations of liability, indemnification and jurisdictional issues defined therein. This Test Report shall not be reproduced, except in full, without prior written consent of the Company.

Intertek Testing Services Korea Ltd.

Seoul Office: Tel : 02-6090-9500 Fax : 02-3409-0026 Daegu Office : Tel : 053-600-8647 Fax : 053-600-8645 Web Site : www.Intertek.co.kr

Seoul Lab. Address : 1/F, A-ju Digital Tower, #284-56, Seongsu 2-ga, Seongdong-Gu, Seoul, 133-833 Korea

Ulsan Lab. Address : #340-2, Yongam-Ri, Chongryang-Myun, Ulsu-Gun, Ulsan 689-865 Korea